




BOUTIQUE

REAL ESTATE^{QLD}



11 De Jarlais Street Earlville QLD

3  1  3 

Offering absolute privacy just three minutes from Earlville Shopping Centre and only 7km to the Cairns Esplanade, this unique split-level residence combines peaceful seclusion with exceptional convenience.

Set high on Henley Hill, this three-bedroom mid-century modern home enjoys sweeping north-facing views across the ranges. Positioned on an expansive 906m² allotment, the property benefits from private rear access via a Council easement and is bordered on the east, south, and west by Council land - ensuring the outlook will never be built out. With just one neighbouring property, tranquillity is guaranteed.

Inside, the home retains its charming character with original

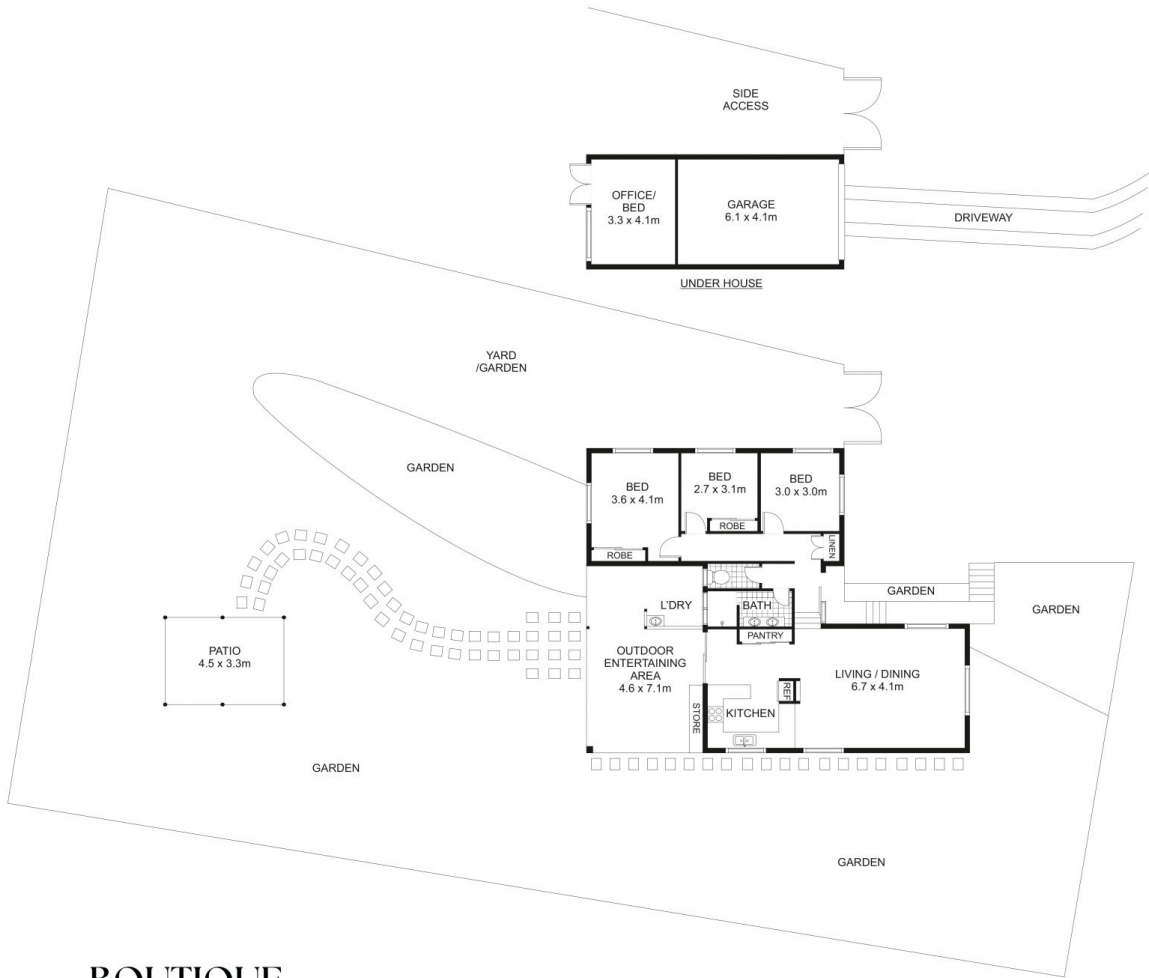
[For full version visit the website](https://www.boutiquerealestateqld.com/sale/qld/cairns-district/earlville/residential/house/8615724)

Type : House
Price : \$ 805,000
Land Size : 906 sqm
View : <https://www.boutiquerealestateqld.com/sale/qld/cairns-district/earlville/residential/house/8615724>



Claire Matchett
(07) 2145 5924

11 DE JARLAIS STREET, EARLVILLE



BOUTIQUE
REAL ESTATE^{SD}

Renderings and floor plans are intended only as a general reference. Feature, materials, finishes, layout and actual measurement of unit may be different than shown.